

Legitronic Labeling Software Number Serialization

This paper will help you get started using basic number serialization in Legitronic Labeling Software. If you need additional support, the Help screens will guide you.

1. Create a Text Field. (Figure 1)

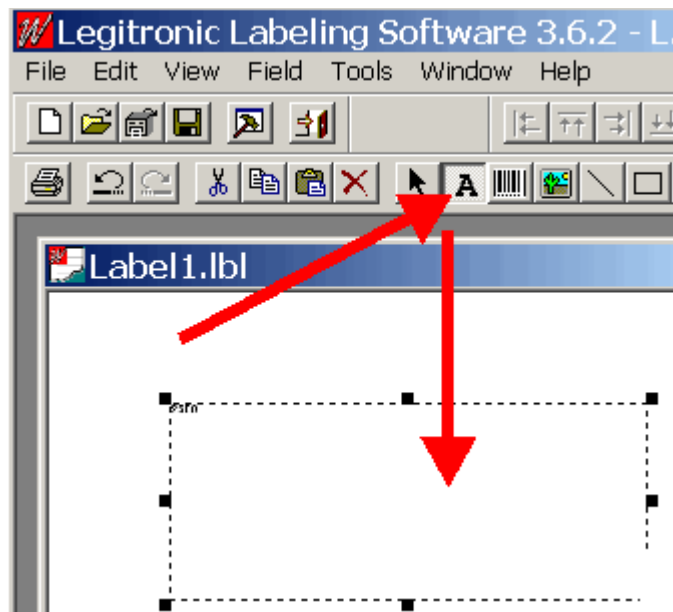


Figure 1

2. Right click in the Text Box and choose Serial. (Figure 2)

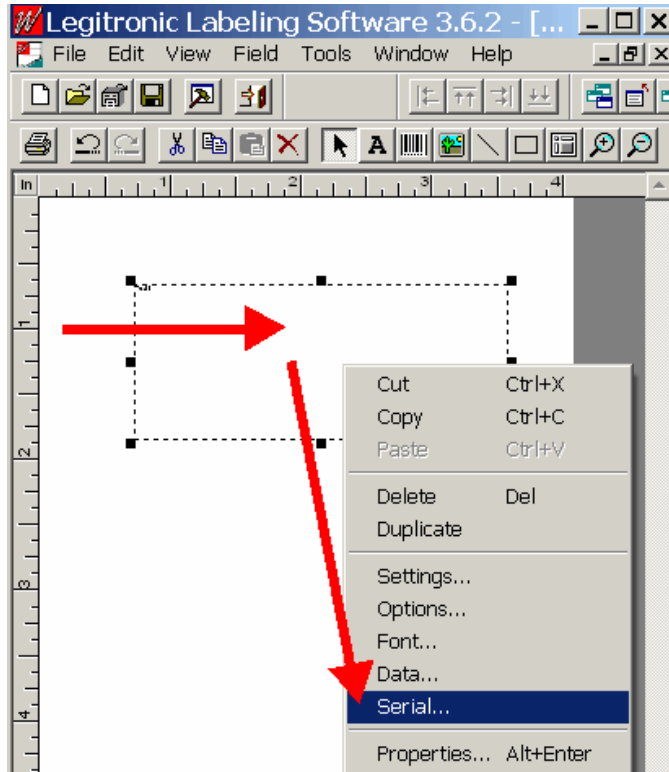


Figure 2

3. Click the Yes button for Serial Number. (Figure 3)

4. Add the Start Value. (Figure 3)

5. Choose the amount to Increment. (Figure 3)

6. Click Apply. (Figure 3)

Note: The highlighted entries show options you can use if you choose.

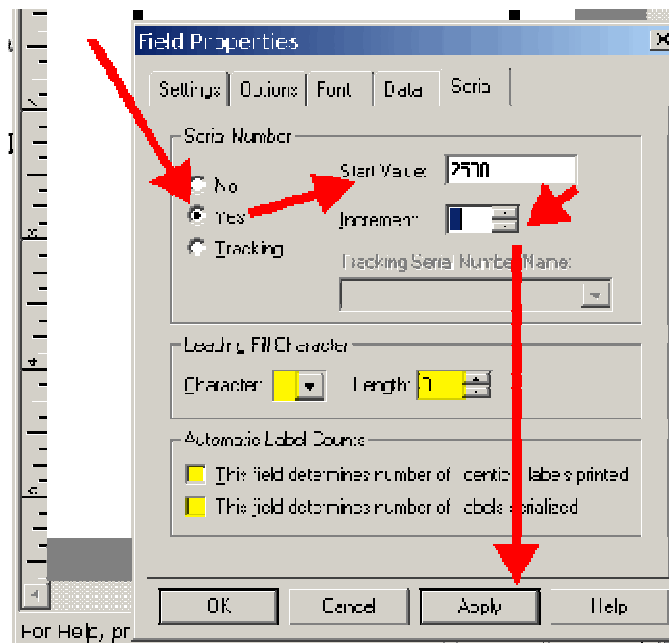


Figure 3

NOTE: Use steps 7 - 9 only if you are using a True Type Font or serializing a number other than in the rightmost places.

7. Click File > Printer Setup. (figure 4)

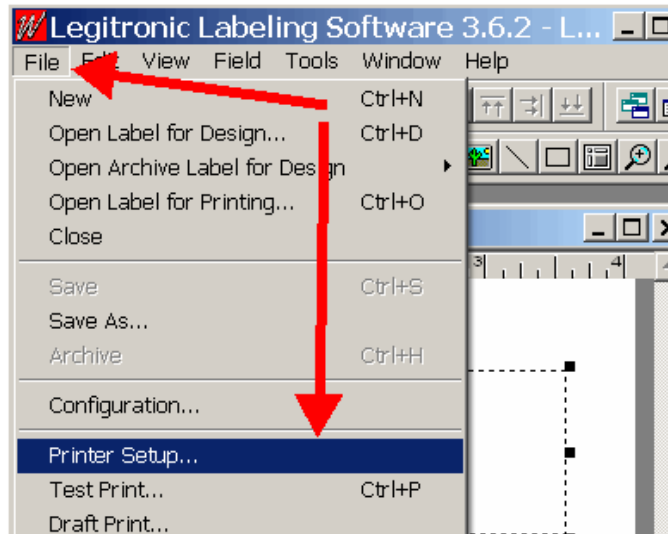


Figure 4

8. Set Computer or printer repetition to Computer Repetition. (Figure 5)

9. Click OK. (Figure 5)

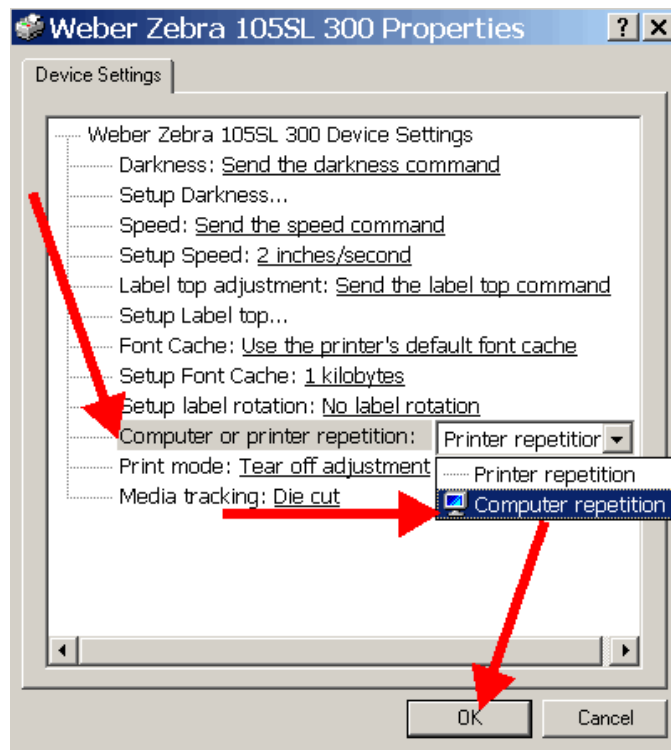


Figure 5

10. Save and close your label. (Figure 6)

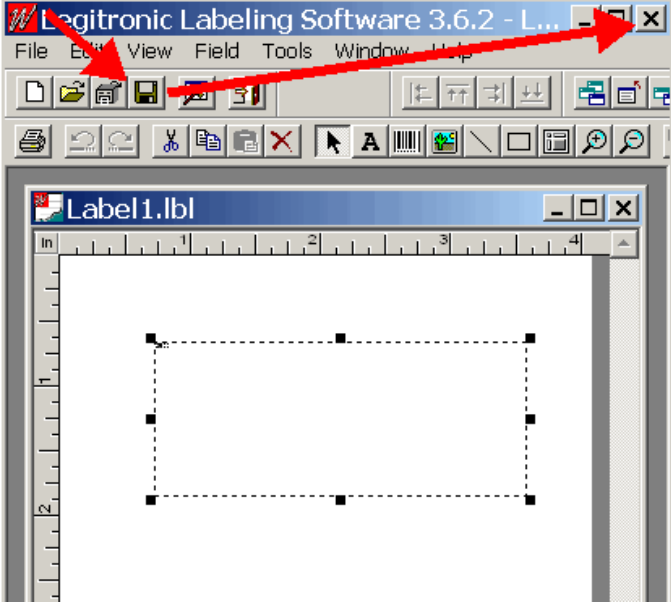


Figure 6

11. Open the label for printing. (Figure 7)

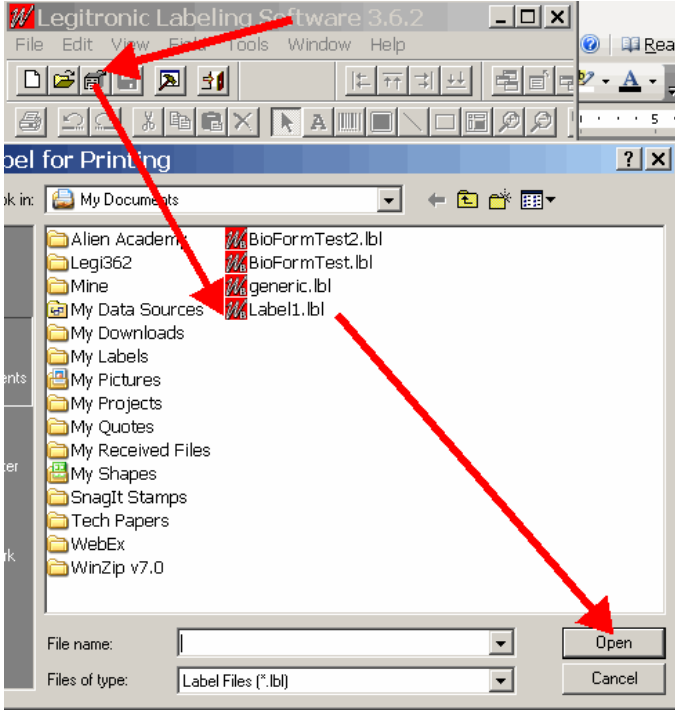


Figure 7

12. Enter the number of serialized labels to print. (Figure 8)
13. Click Save to disk. (Figure 8)
14. Click Print. (Figure 8)

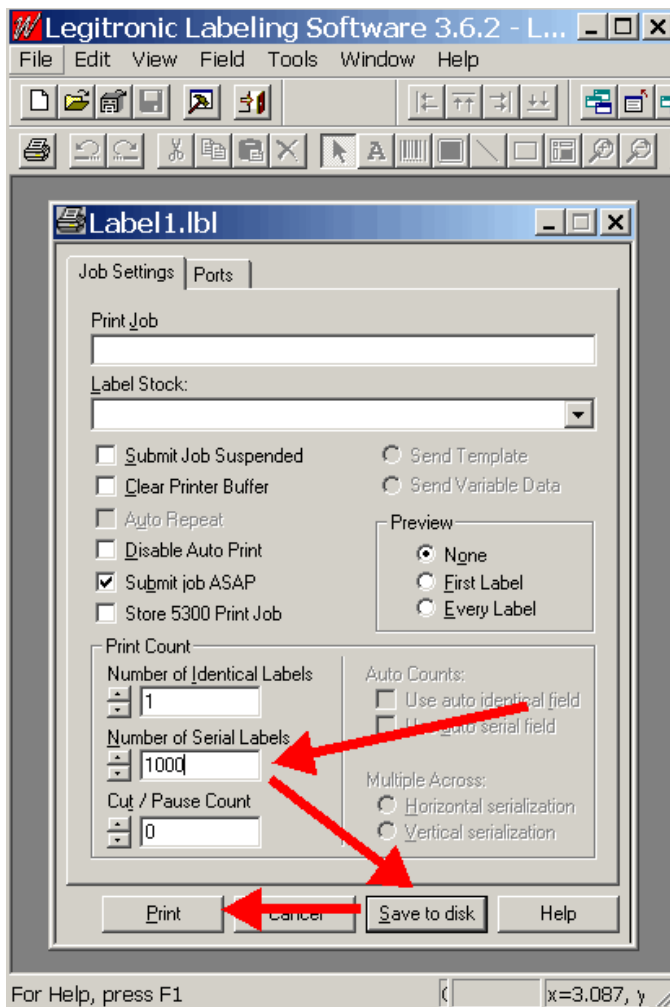


Figure 8